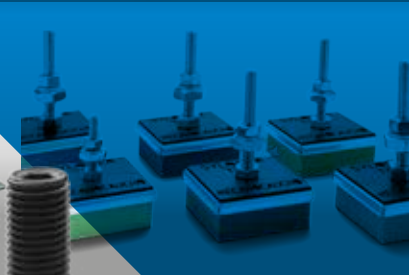
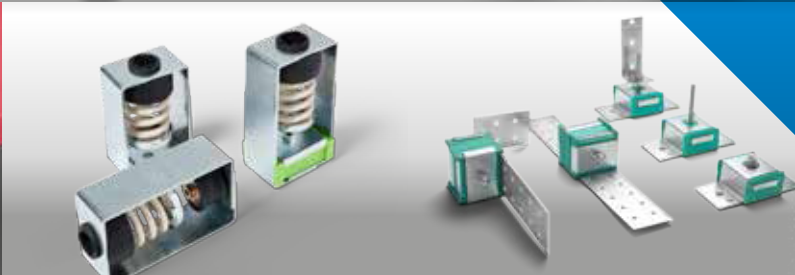
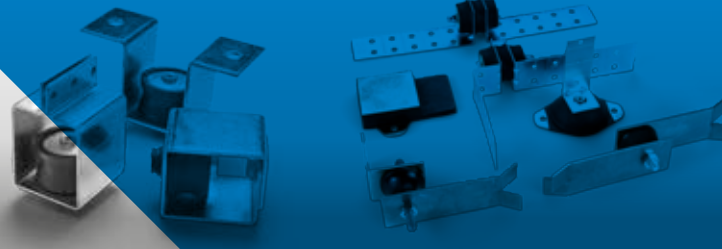
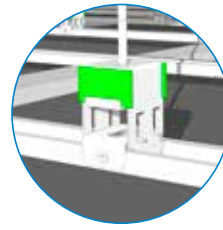




AKUSTIK +

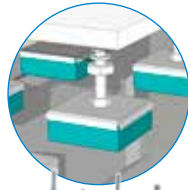




Noise isolation ceiling



FZ + Sylomer®



TSR + Sylomer®



SRB & SRS + Sylomer®



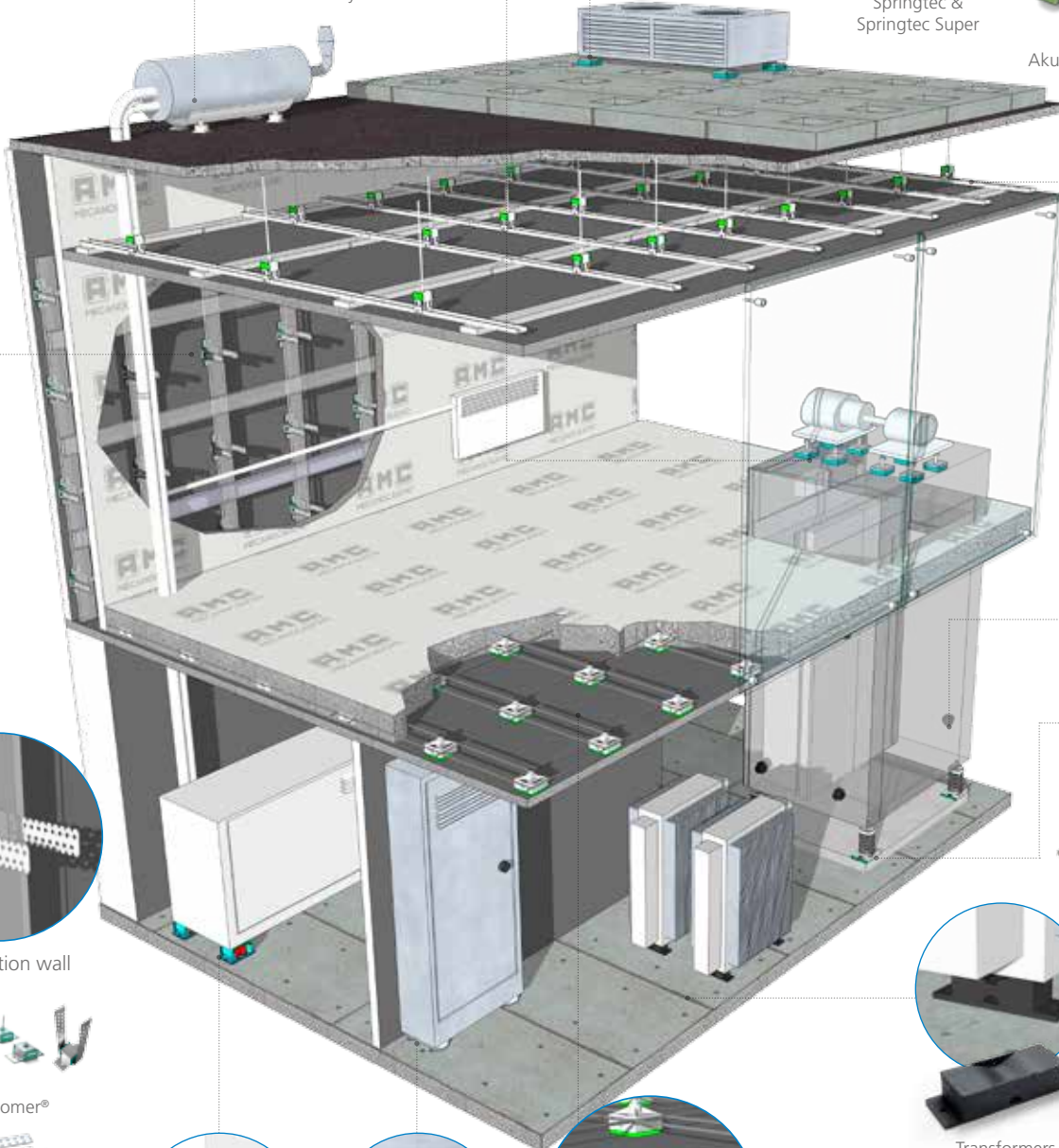
Grand Akustik



Springtec & Springtec Super



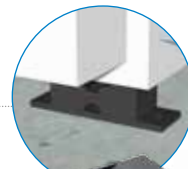
Akustik + Sylomer®



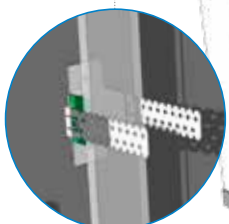
SCB



Vibrabsorber + Sylomer®



Transformers



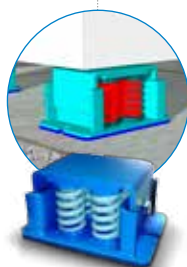
Noise isolation wall



EP+Sylomer®



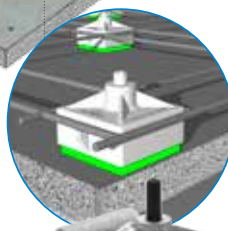
EP



4 AMC Seismic + Sylomer®



BRB



FZH + Sylomer®



Noise isolation floor





Factory 1 of AMC-MECANOCAUCHO



Factory 2 of AMC-MECANOCAUCHO



Factory of **syloMER** in Austria.



Akustik+Sylomer® is the trademark of a new solution for the anti-vibration mountings of false ceilings or vibrating elements that have to be suspended. They are used for the attenuation of vibrations, reducing structure-borne noise.

AMC-MECANOCAUCHO® has been manufacturing anti-vibration suspensions since 1969, and since then it has been manufacturing suspensions for this same purpose, using rubber, spring or a combination of both, called **Akustik**.

GETZNER Werkstoffe GmbH manufactures a prestigious anti-vibration material called **Sylomer®** whose main application has been the isolation of vibrations produced by railways. Operating from Austria since 1969, it is now the leader in its sector, and boasts totally cutting-edge technological facilities and media for vibration isolation.

The **Akustik+Sylomer®** ceiling mounts are made of Sylomer®, a microcelular polyurethane material specially conceived for vibration isolation. This material produces a higher degree of damping than the elastomers traditionally used for this purpose.

ENGINEERING



LOGISTICS



24 h.

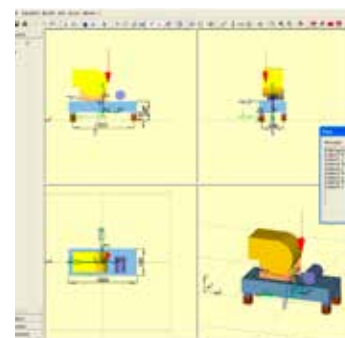
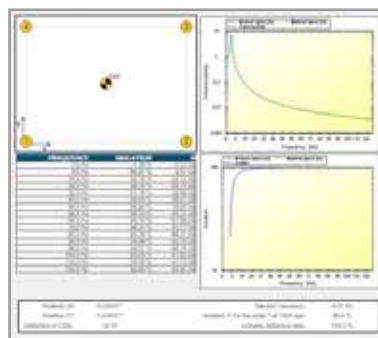


48 h.



72 h.

ANTIVIBRATION CALCULATIONS

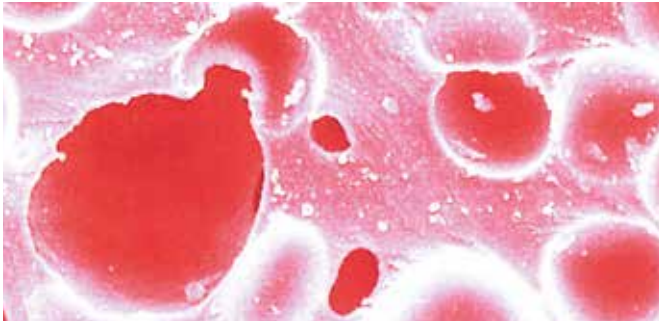


EXPOSITION TOOLS FOR DISTRIBUTORS



< The cooperation of two great companies

QUALITY



We have more than 45 years of experience providing quality products, capable of overcoming the most demanding tests. For this purpose it is vital our knowledge on the correct manufacturing processes and the use first grade components.

SERVICE



We keep in stock more than 3 Million euros of finished products. This fact is key to respond quick to urgent enquiries.

ENGINEERING SERVICES



Calculations • Development • Tests • Measurements

Our technical department makes calculations, develops new products, analyzes their elastical properties and make on site measurements in order to find the correct technical solution to solve each vibration problem.

DISTRIBUTOR SUPPORT



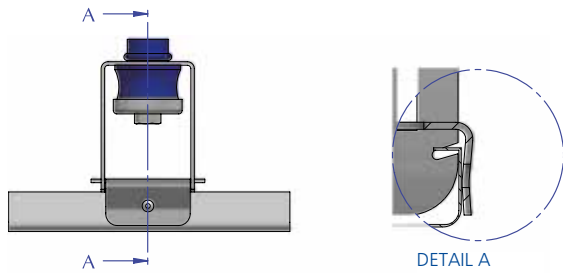
AMC-MECANOCAUCHO offers a wide range of exposition displays on store. Should you require one, do not hesitate to contact our sales dpt, so they can offer you the one that adapts better to your needs.

"The SUPER security in your installation"

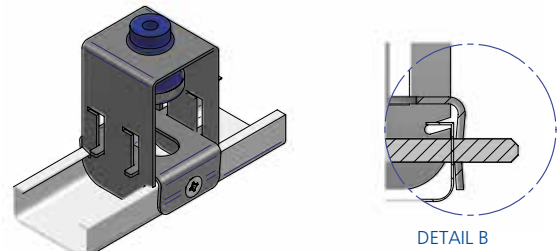
Akustik Super

The "SUPER" security feature is adaptable to the different profiles existing on the market. The external dimension of the profiles that exist on the market may vary, our "SUPER" security system with lip form adapts to the different lengths of the profile having a tight fit.

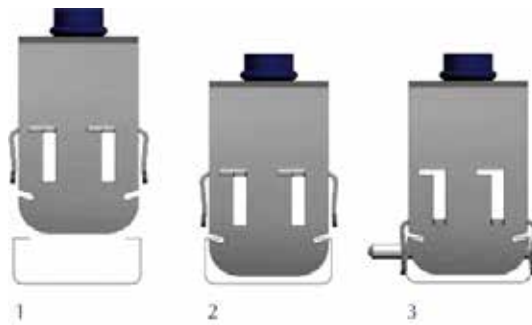
1- The security system is adaptable to different widths of profiles.



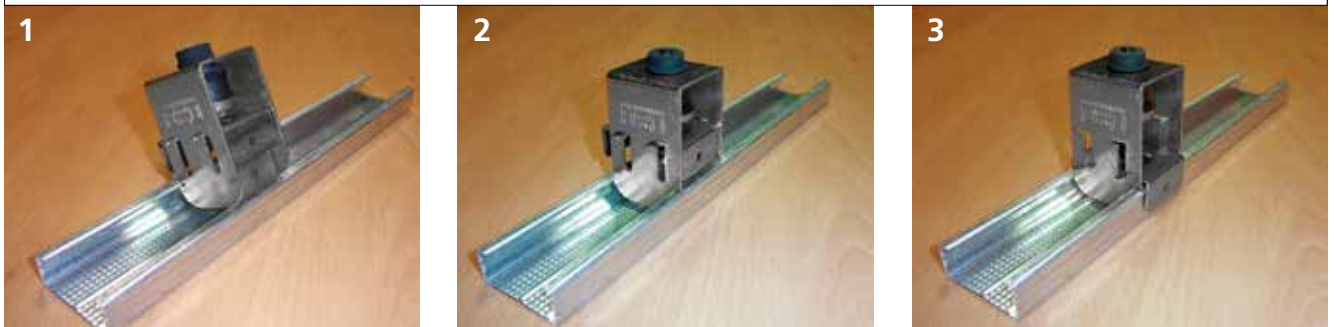
2- The "SUPER" security system admits the possibility of inserting a blocking screw.



Installation Steps

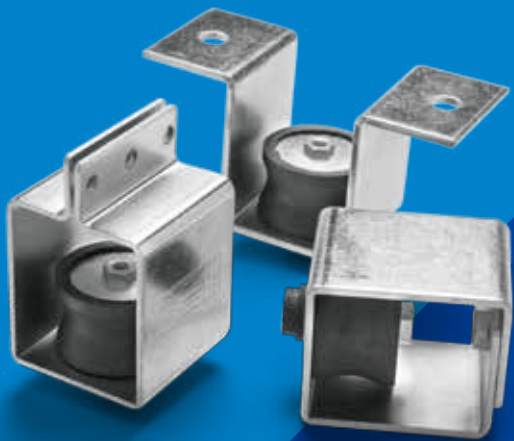


Installation of Akustik Super rubber



Installation of Akustik Super + **sylomer**[®] by getzner





Akustik+ 
MECANOCAUCHO
Reliability and cost effectiveness

BASIC KNOWLEDGE ON STRUCTURAL ACOUSTICS

1.-NOISE AND VIBRATION PROBLEMS IN PREMISES

Sound that is unpleasant to the human ear is known as noise, and ecologically speaking is a form of pollution that is becoming increasingly more widespread due to town and city development.

It could be defined as a vibratory phenomenon propagated in an elastic medium (ceilings, walls, floors and the air itself) causing perturbations in it. To isolate any premises or venue properly, the first step is to identify the composition and the values of the noise (spectrum of frequencies, noise level etc.).

Once we know the magnitude of the noise or the vibrations to be insulated, we must built an unconnected off-the-floor frame which gives us the insulating and dampening values we need.



2.-THE FUNCTION OF THE ANTIVIBRATION MOUNTS IN A SOUND-PROOFED PREMISES

All rigid connections of the false structure or "frame" of the premises must be installed elastically onto the definitive slabbing. If any rigid joint is left it will act as acoustic bridge and would annul the efficacy of the other acoustic elements placed: antivibratory, absorbents, fibreglass, plasterboard, concrete etc. There are several elements designed for the insulation of ceilings, walls and floors.



Ceiling mounts



Wall Mounts



Floor Mounts

3.-ANTIVIBRATION SOLUTIONS

A. RUBBER

Natural frequency between 7 - 15 Hz
High dampening.
Small static deflections.
Effective in medium and high frequencies.



B. SPRING

Low natural frequency of 3 - 6 Hz.
Same static and dynamic behaviour.
Low dampening, excellent insulation.



C. SPRING RUBBER

Natural frequency of 3 - 15 Hz.
High dampening and insulation.
Effective at all frequencies.



AKUSTIK+ AMC Mecanocaucho

BASIC KNOWLEDGE ON STRUCTURAL ACOUSTICS

4.- THE IMPORTANCE OF THE DYNAMIC FREQUENCY OF THE ANTIVIBRATION MOUNTS.

Real data are required to carry out a study and calculation of a premises.

The static stiffnesses that are provided by static load-deflection graphs are not valid for the calculation of a realistic insulation. Experience shows that the static calculations are very different from reality.

At the moment, AMC has a dynamic testing machine that can generate the most common types of vibration on premises, giving real frequency values, insulation, loss angle and critical dampening rate.



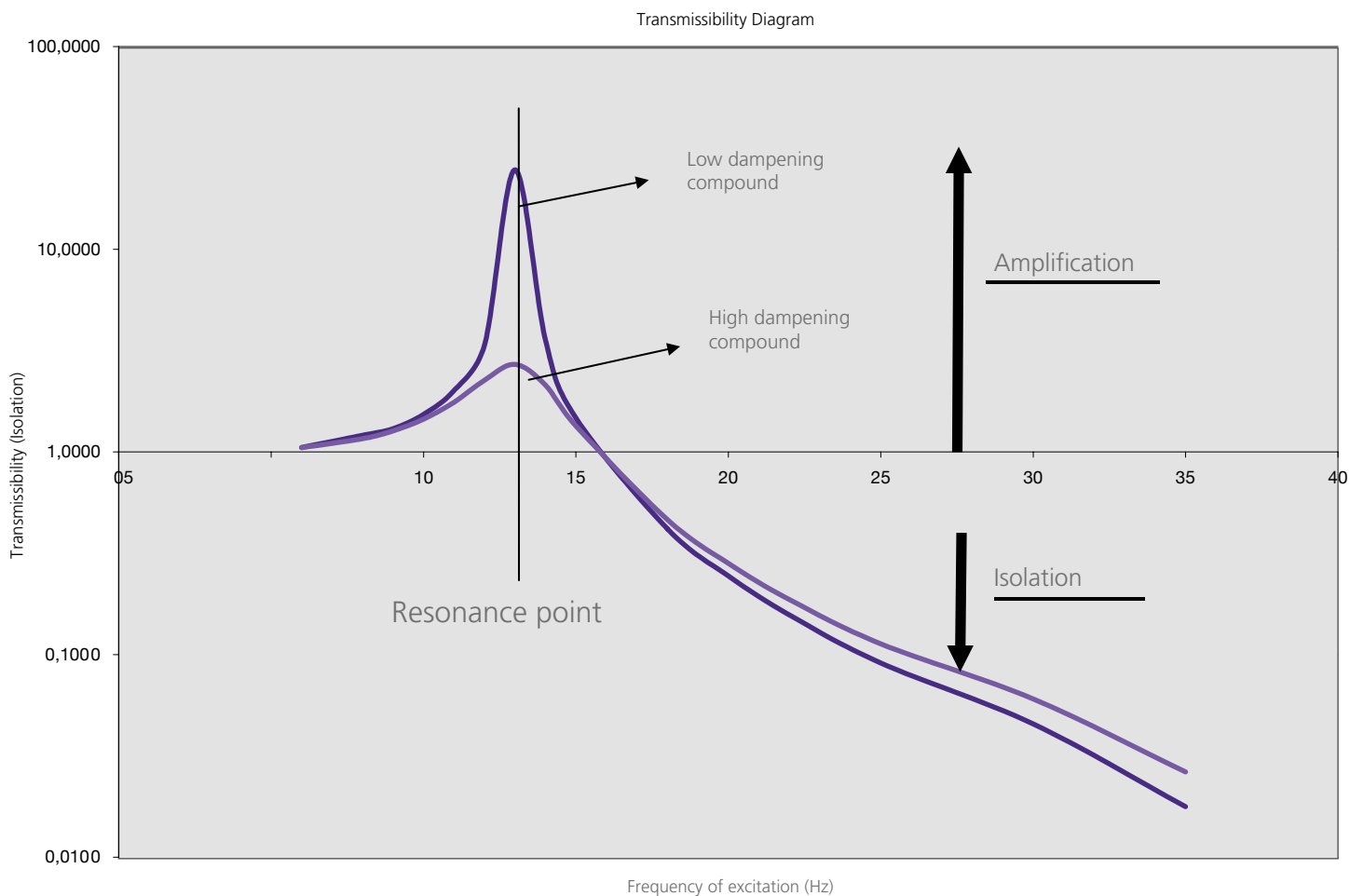
Dynamic testing machine

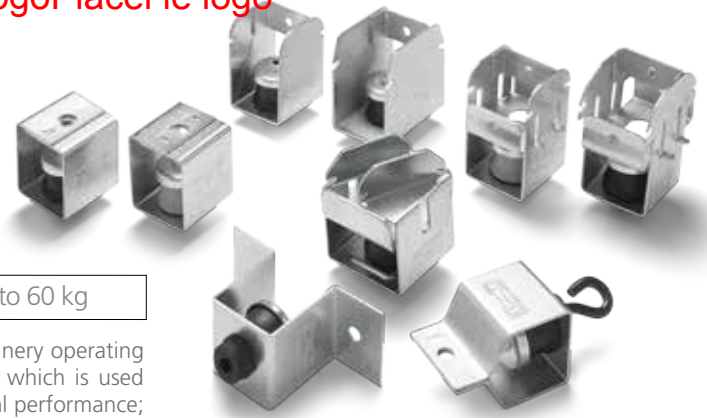
5.- INSULATION AND DAMPENING. GOOD INFORMATION BETTER SOLUTION.

Thanks to the testing we have nowadays, it is possible to clear up the role of dampening in a mass-spring insulation.

Elements with high dampening absorb part of the vibration energy that reaches them, so if resonance occurs, they absorb part of this energy, reducing its negative effects. On the other hand, in the event of resonance, low dampening elements amplify the vibration without absorbing energy.

Example of isolation and dampening of vibrations.





CEILING MOUNTS

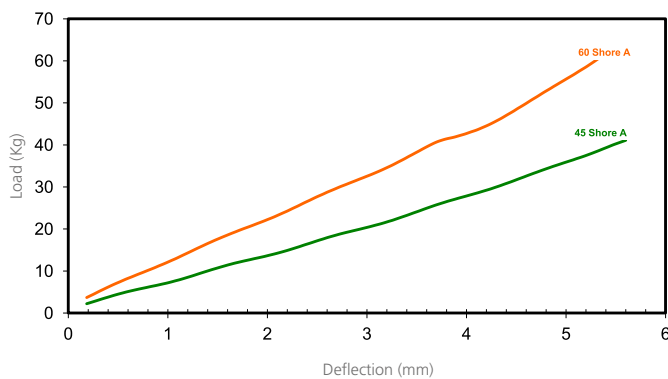
Akustik Range

A-45 Loads from 8 to 30 kg **B-60 Loads from 25 to 60 kg**

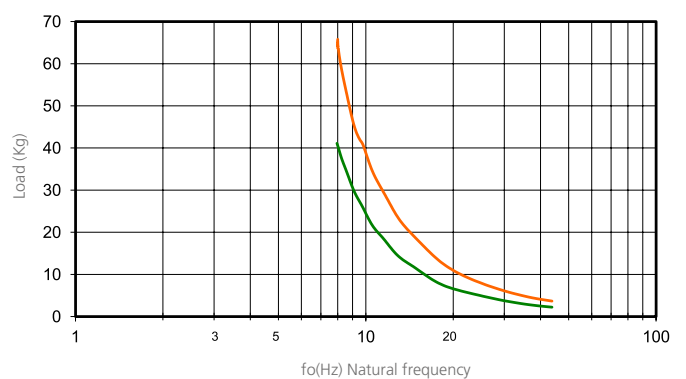
Range designed for suspension of false acoustic ceilings and machinery operating at more than 1.000 r.p.m. The same vibration damping element which is used throughout the Akustik range is made of rubber of high mechanical performance; it is specially designed for vibration damping. The metallic structure is designed to resist loads up to 650 kg. It is supplied with an anti-corrosive zinc-plated coat.

Dynamic behaviour

Static load deflection graph



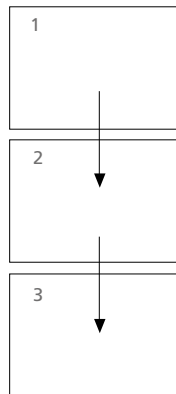
Natural frequency (Hz)



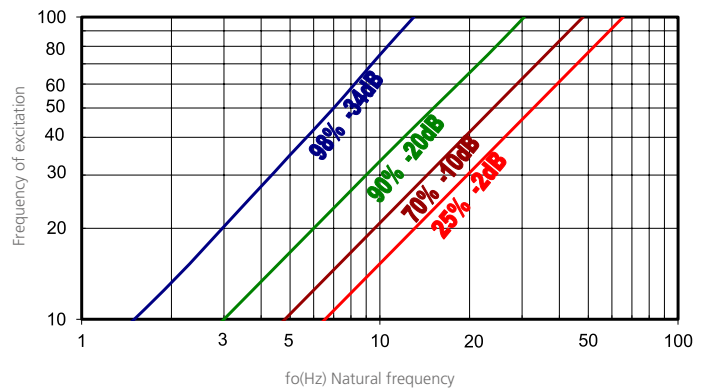
To select correct mounting, following data are needed:

- Load per mounting (kg).
- Disturbing frequency (Hz).

Select correct load line in diagram 1 and refer to diagram 2 to obtain the Natural frequency. With this natural frequency prolong this line to the diagram 3 and obtain the % of isolation at the given frequency of excitation.



% of isolation and attenuation in dB



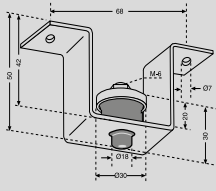
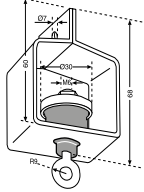
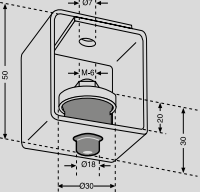
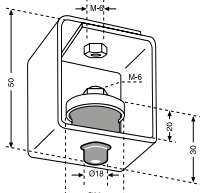
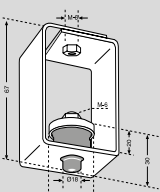
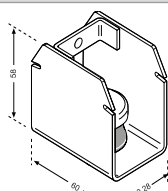
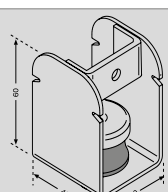
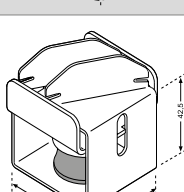
	REF. AMC	LOAD	CODE
	Akustik Super T-47 A-45	8-30 Kg.	23801
	Akustik Super T-47 B-60	25-60 Kg.	23802

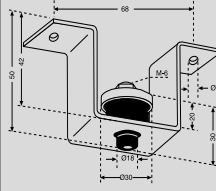
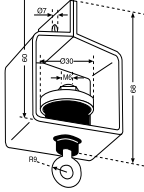
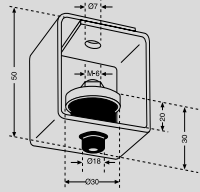
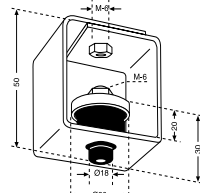
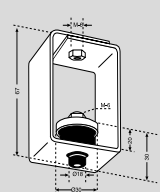
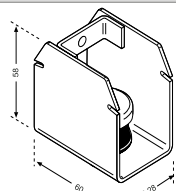
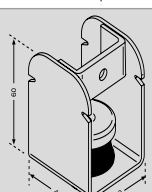
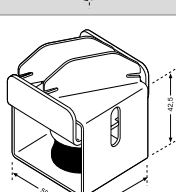
	REF. AMC	LOAD	CODE
	Akustik Super T-60 A-45	8-30 Kg.	23811
	Akustik Super T-60 B-60	25-60 Kg.	23812

	REF. AMC	LOAD	CODE
	Akustik Sierra A-45	8-30 Kg.	23861
	Akustik Sierra B-60	25-60 Kg.	23862

AKUSTIK+ AMC Mecanocaucho

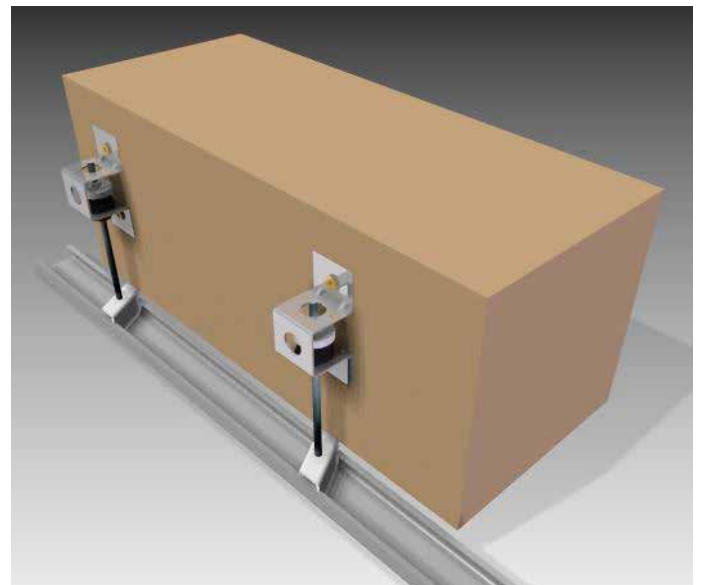
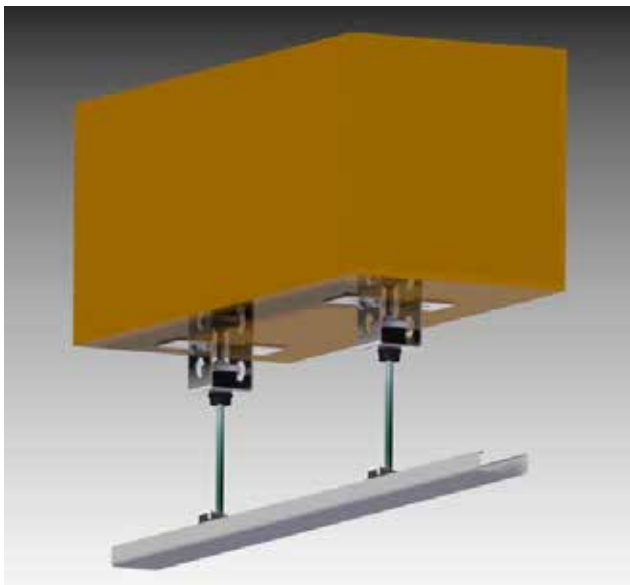
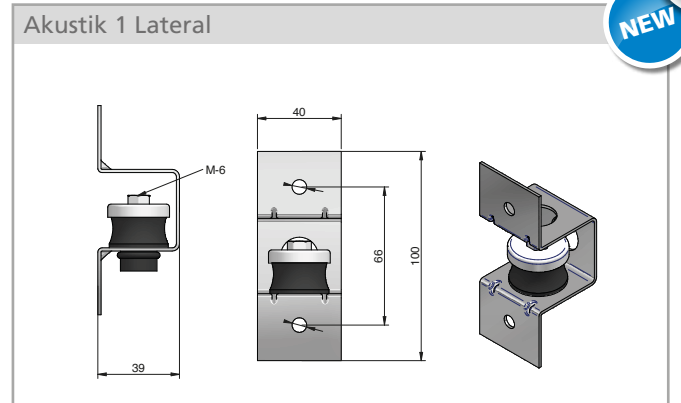
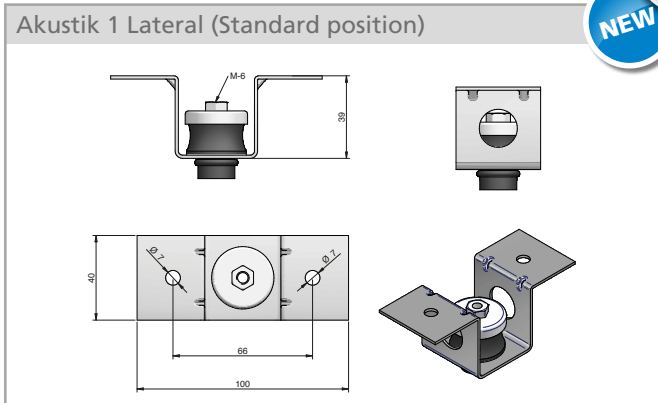
CEILING MOUNTS

REF. AMC	LOAD	CODE	SUMMARY
 AMCAkustik 1 A-45	8-30 Kg	23101	Fitted directly to ceiling using two holes.
 Akustik 2 A-45	8-30 Kg	23111	Anchoring to the ceiling with hooks.
 Akustik 3 A-45	8-30 Kg	23121	Fitted by using an M-6 rod and a nut.
 Akustik 4 A-45	8-30 Kg	23131	Fitted to ceiling using an M-6 rod.
 Akustik 4 high A-45	8-30 Kg	23133	Fitted to ceiling using an M-6 rod.
 Akustik Rapid T-60 A-45	8-30 Kg	23143	Fitted to ceiling using an M-6 rod.
 Akustik Rapid T-47 A-45	8-30 Kg	23145	Designed for easy and accessible fitting together with great strenght.
 Akustik Safety T-47 A-45	8-30 Kg	23210	The rotational system of the part assures the correct installation thanks to the design of the metal part at 45°.

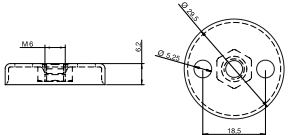
REF. AMC	LOAD	CODE	SUMMARY
 Akustik 1 B-60	25-60 Kg.	23102	Fitted directly to ceiling using two holes.
 Akustik 2 B-60	25-60 Kg.	23112	Anchoring to the ceiling with hooks.
 Akustik 3 B-60	25-60 Kg.	23122	Fitted by using an M-6 rod and a nut.
 Akustik 4 B-60	25-60 Kg.	23132	Fitted to ceiling using an M-6 rod.
 Akustik 4 high B-60	25-60 Kg.	23134	Fitted to ceiling using an M-6 rod.
 Akustik Rapid T-60 B-60	25-60 Kg.	23144	Fitted to ceiling using an M-6 rod.
 Akustik Rapid T-47 B-60	25-60 Kg.	23146	Designed for easy and accessible fitting together with great strenght.
 Akustik Safety T-47 B-60	25-60 Kg.	23213	The rotational system of the part assures the correct installation thanks to the design of the metal part at 45°.

CEILING MOUNTS

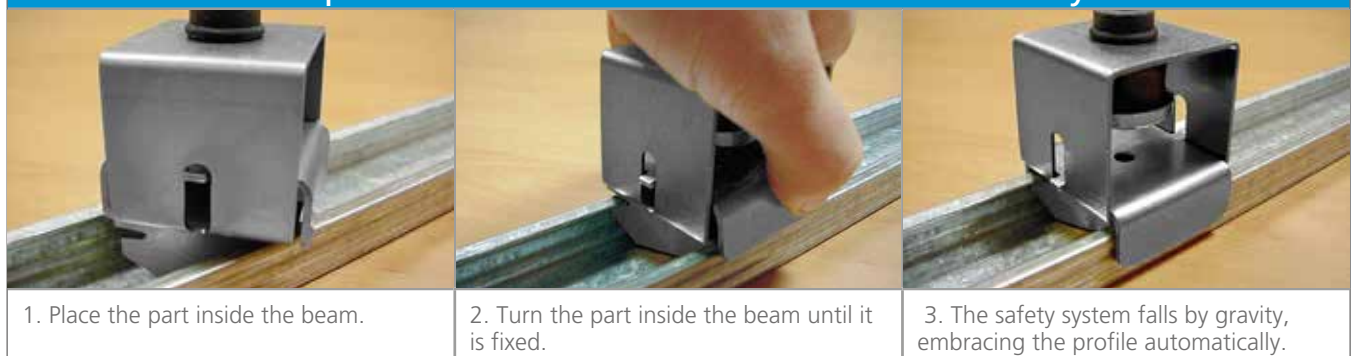
Akustik Range



REF. AMC	LOAD	CODE
Akustik 1 Lateral A-45	8-30 Kg	23571
Akustik 1 Lateral B-60	25-60 Kg	23572

REF. AMC	LOAD	CODE
	Levelling bell	23159

Steps of the installation for the Akustik Safety



1. Place the part inside the beam.

2. Turn the part inside the beam until it is fixed.

3. The safety system falls by gravity, embracing the profile automatically.

AKUSTIK + AMC Mecanocaucho & AKUSTIK+^{by gotomer}sylomer[®]

AKUSTIK+ AMC Mecanocaucho

CEILING MOUNTS

Grand Akustik range

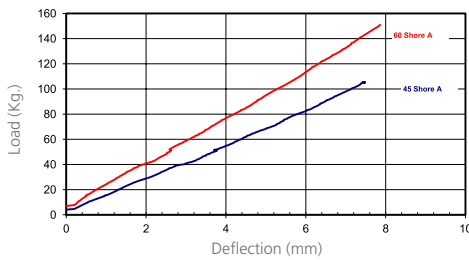
A-45 load from 40 to 100 kg	B-60 load from 80 to 150 kg
-----------------------------	-----------------------------

Range designed for suspension of false acoustic ceilings and machinery operating at more than 1.000 r.p.m. The same antivibration element is used for all the range. This element is made of rubber offering high mechanical performance and it is specially studied for vibratory insulation. The metallic structure is designed to resist loads up to 1000 Kg. It is supplied with an anticorrosive zinc-plated coat.

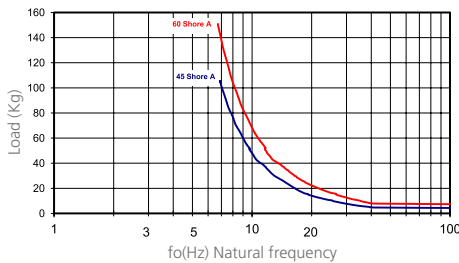


Dynamic behaviour

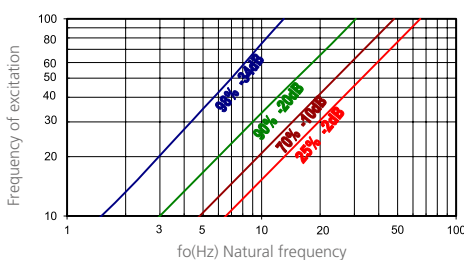
Static load deflection graph



Natural frequency (Hz)



% of isolation and attenuation in dB



	REF. AMC	LOAD	CODE
	Grand Akustik 1 A-45	40-100 Kg.	23201
	Grand Akustik 2 A-45	40-100 Kg.	23211
	Grand Akustik 3 A-45	40-100 Kg.	23221
	Grand Akustik 1 B-60	80-150 Kg.	23202
	Grand Akustik 2 B-60	80-150 Kg.	23212
	Grand Akustik 3 B-60	80-150 Kg.	23222



Grand Akustik 3 Grand Akustik 2 Example of installation

CEILING MOUNTS

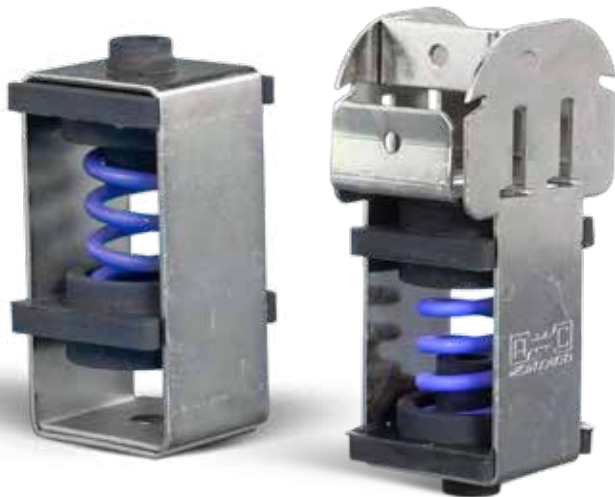
Springtec range

Load from 5 to 60 kg.

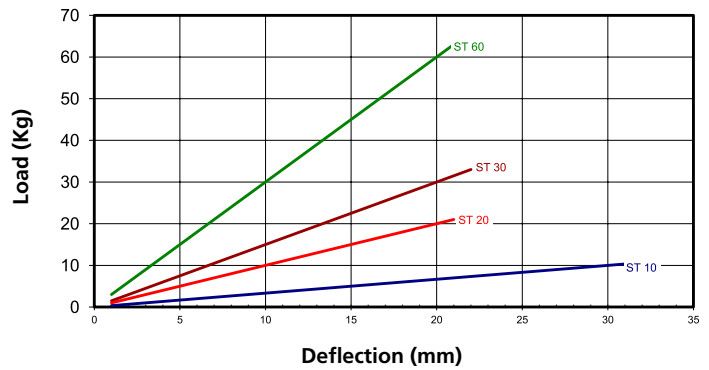
Range designed for suspensions of false acoustic ceilings and machinery working at more than 450 r.p.m. Manufactured with piano tail quality spring of great mechanical resistance guided by two rubber plates with integral end stops to prevent contact between spirals when overloading.



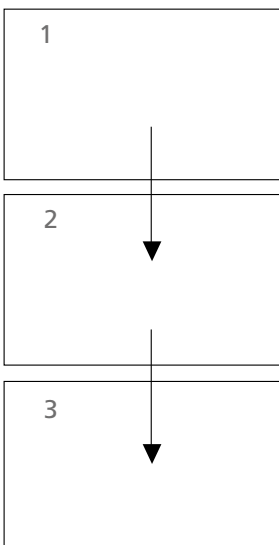
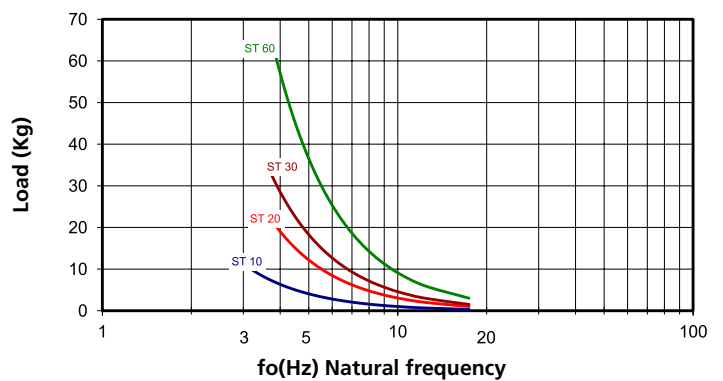
Dynamic behaviour



Static load deflection graph



Natural frequency (Hz)

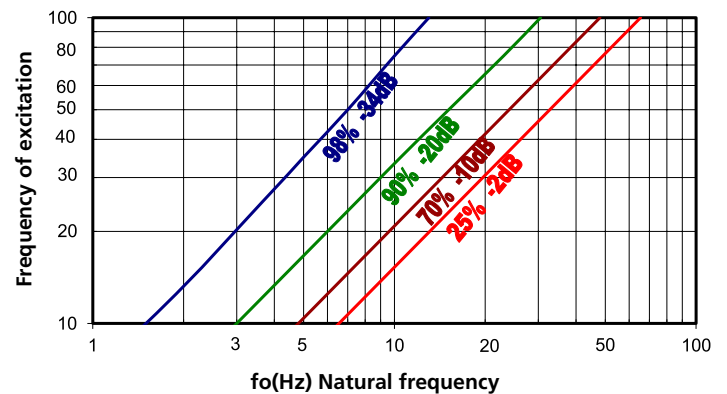


To select correct mounting, following data are needed:

- Load per mounting (kg).
- Disturbing frequency (Hz).

Select correct load line in diagram 1 and refer to diagram 2 to obtain the Natural frequency. With this natural frequency prolong this line to the diagram 3 and obtain the % of isolation at the given frequency of excitation.

% of isolation and attenuation in dB



AKUSTIK + AMC Mecanocaucho & AKUSTIK+^{by getson}sylomer[®]

AKUSTIK+ AMC Mecanocaucho

CEILING MOUNTS

Springtec ceiling hanger

	LOAD AMC	MAX. PERMANENT LOAD	LOAD
	Springtec ST-10 Type 1	10 Kg.	23301
	Springtec ST-20 Type 1	20 Kg.	23302
	Springtec ST-30 Type 1	30 Kg.	23303
	Springtec ST-60 Type 1	60 Kg.	23304
	Springtec ST-10 Type 2	10 Kg.	23305
	Springtec ST-20 Type 2	20 Kg.	23307
	Springtec ST-30 Type 2	30 Kg.	23309
	Springtec ST-60 Type 2	60 Kg.	23311

	LOAD AMC	MAX. PERMANENT LOAD	LOAD
	Springtec Super T-47 Type ST-10	10 Kg.	23421
	Springtec Super T-47 Type ST-20	20 Kg.	23422
	Springtec Super T-47 Type ST-30	30 Kg.	23423
	Springtec Super T-47 Type ST-60	60 Kg.	23424
	Springtec Super T-60 Type ST-10	10 Kg.	23351
	Springtec Super T-60 Type ST-20	20 Kg.	23352
	Springtec Super T-60 Type ST-30	30 Kg.	23353
	Springtec Super T-60 Type ST-60	60 Kg.	23354



CEILING MOUNTS

VT ceiling hanger

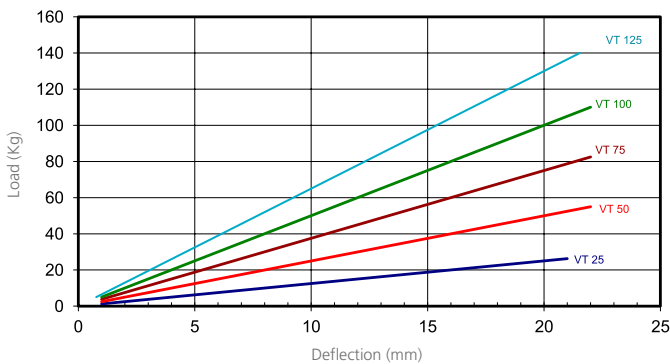
Load from 10 to 750 kg

Range designed for suspension of false acoustic ceilings and machinery operating at more than 450 r.p.m. These isolators are made of piano tail spring quality with a high mechanical performance. They incorporate rubber bush

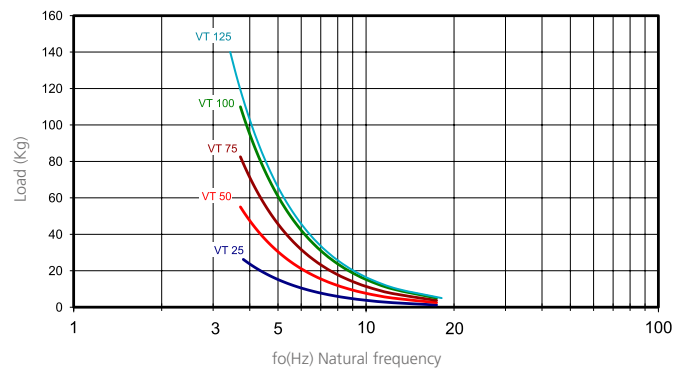
concieved to avoid the "acoustic bridges" and the contact of a non aligned screw. The metallic structure is very robust and it is supplied with an anti-corrosive zinc-plated coat.

Dynamic behaviour

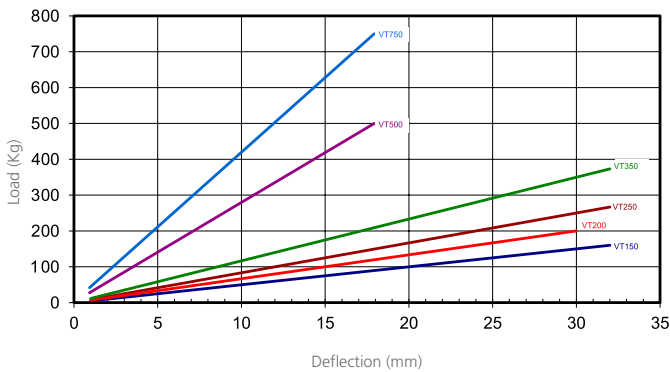
Static load deflection graph



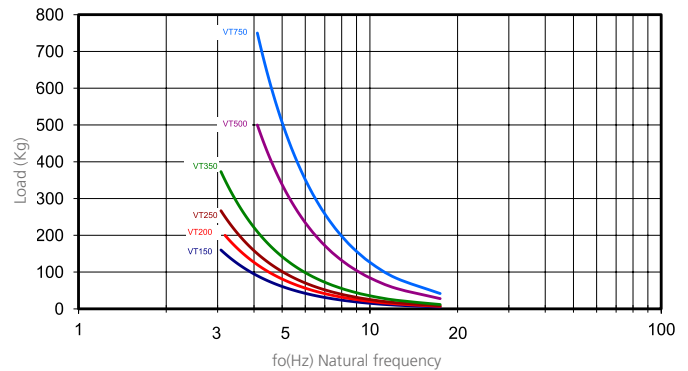
Natural frequency (Hz)



Grafik Federkennlinien



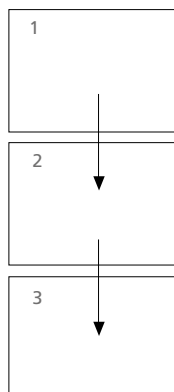
Natural frequency (Hz)



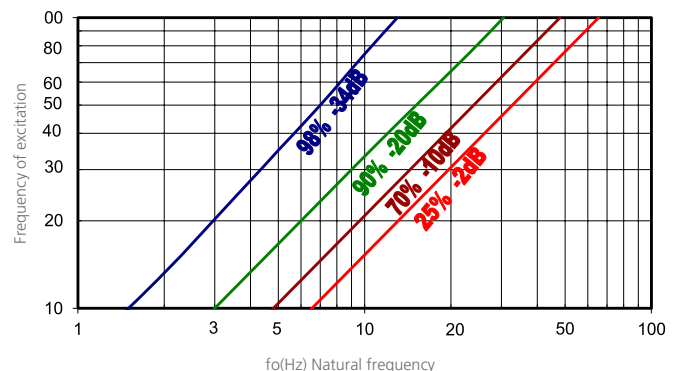
To select correct mounting, following data are needed:

- Load per mounting (kg).
- Disturbing frequency (Hz).

Select correct load line in diagram 1 and refer to diagram 2 to obtain the Natural frequency. With this natural frequency prolong this line to the diagram 3 and obtain the % of isolation at the given frequency of excitation.




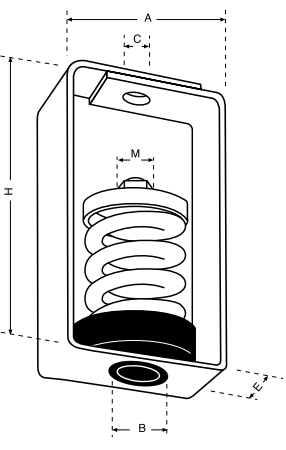
% of isolation and attenuation in dB



AKUSTIK+ AMC Mecanocaucho

CEILING MOUNTS

VT ceiling hanger

	REF. AMC	MAX. PERMANENT LOAD	DIMENSIONS						CODE
			A	H	B	C	E	M	
 	VT 25	25 Kg.	75	120	30	12	50	5/16-18	20201
	VT 50	50 Kg.	75	120	30	12	50	5/16-18	20202
	VT 75	75Kg.	75	120	30	12	50	5/16-18	20203
	VT 100	100 Kg.	75	120	30	12	50	5/16-18	20204
	VT 125	125 Kg.	75	120	30	12	50	5/16-18	20211
	VT 150	150 Kg.	120	160	30	16	80	1/2-13	20205
	VT 200	200 Kg.	120	160	30	16	80	1/2-13	20210
	VT 250	250 Kg.	120	160	30	16	80	1/2-13	20206
	VT 350	350 Kg.	120	160	30	16	80	1/2-13	20207
	VT 500	500 Kg.	140	180	30	18	100	9/16-12	20208
VT 750	750 Kg.	140	180	30	18	100	9/16-12	20209	



CEILING MOUNTS

Spring Rubber® ceiling hanger

Load from 8 to 100 kg.

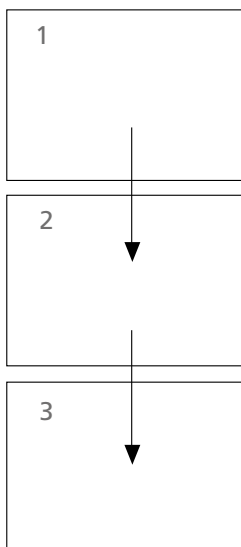
This is a new range of anti-vibration mounts, combining the high deflection of the spring with the dampening properties of the rubber. The metallic structure is very robust and it is supplied with an anticorrosive zinc-plated coat.



To select correct mounting, following data are needed:

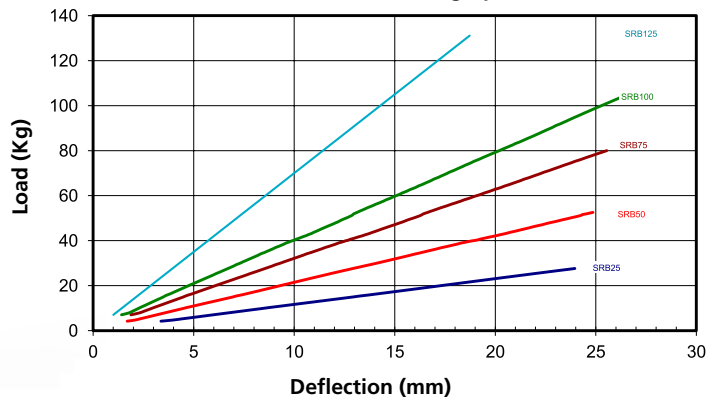
- Load per mounting (kg).
- Disturbing frequency (Hz).

Select correct load line in diagram 1 and refer to diagram 2 to obtain the Natural frequency. With this natural frequency prolong this line to the diagram 3 and obtain the % of isolation at the given frequency of excitation.

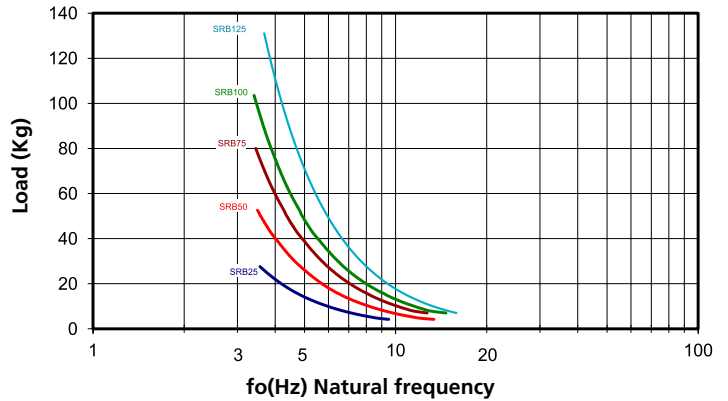


Dynamic behaviour

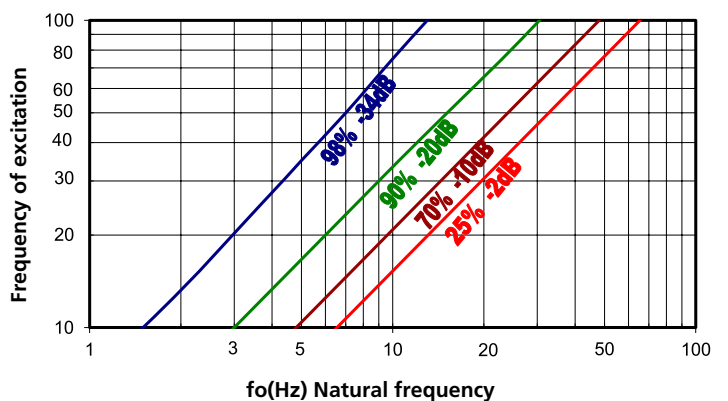
Static load deflection graph



Natural frequency (Hz)



% of isolation and attenuation in dB



AKUSTIK + AMC Mecanocaucho & AKUSTIK+^{by sylomer}

AKUSTIK+ AMC Mecanocaucho

CEILING MOUNTS

Spring Rubber® ceiling hanger

	REF. AMC	MAX. PERMANENT LOAD	DIMENSIONS					CODE
			A	H	B	C	E	
	SRB-25	25 Kg	75	150	30	12	50	23401
	SRB-50	50 Kg	75	150	30	12	50	23402
	SRB-75	75 Kg	75	150	30	12	50	23403
	SRB-100	100 Kg	75	150	30	12	50	23404
	SRB-125	125 Kg	75	150	30	12	50	23405



WALL MOUNTS

EP wall mount

The EP wall mounts are manufactured in multiple formats to suit the different installation techniques. They are specially interesting for the fixation of walls exceeding 3.5m height. The EP mounts should be installed 1.5 meters in height. Example: Wall of 4.5 metres, the EP mounts should be installed at 1.5 and 3.



AKUSTIK+ AMC Mecanocaucho

WALL MOUNTS

EP wall mount

REF. AMC	SUMMARY	CODE
E.P. 100 	Mount designed for vibration damping of walls, equipped with long ring-attached screws for threading onto wooden or plastified walls. Maximum load per damper 10 kg.	24001
E.P. 200 	Mount designed for vibration damping of walls, equipped with flanges for fitting onto concrete. Maximum load per damper 10 kg.	24002
E.P. 300 	Mount designed for vibration damping of walls, equipped with flange and angle for fitting onto concrete and threaded. Maximum load per damper 10 kg.	24003
E.P. 400 	This mount is designed to be screwed to the profile, with the possibility of choosing different distances thanks to its 3 holes. The anchoring in to the wall is made by 2 fixing flanges.	24004
E.P. 600 	This mount is conceived to be fixed between two elements through two metal parts with "pre-drilled holes". The metal parts are easy to cut in order to adapt better to each work.	24008
E.P. 650 	This mount is conceived to be fixed between two elements through two metal parts with "pre-drilled holes". The metal parts are easy to cut in order to adapt better to each work. Following this idea we can realise a great amount of variants in order to adapt better to each work. Please enquire us if you need a more adapted system for your work.	24009

REF. AMC	SUMMARY	LOAD MÁX. (Kg.)	CODE
E.P. 500 	This mount is designed to offer an elastic base of the plasterboard plates.	150	23156

FLOATING FLOOR MOUNTS

BF Floating floor mounts

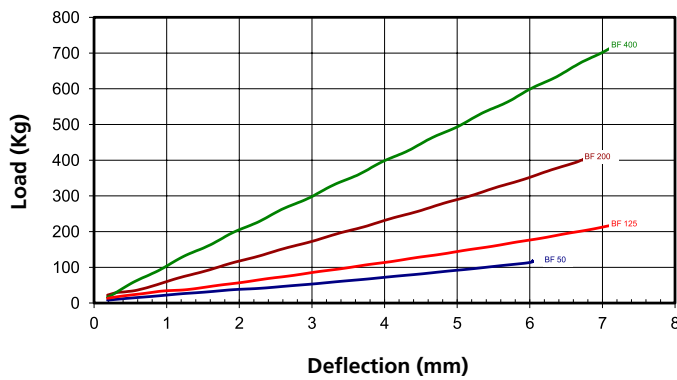
Load from 50 to 400 kg

A range designed for use in floating floors or machinery working at more than 700 r.p.m. Manufactured in rubber SMR 5CV type with excellent mechanical insulation qualities. We are able to manufacture them in different diameters and heights.

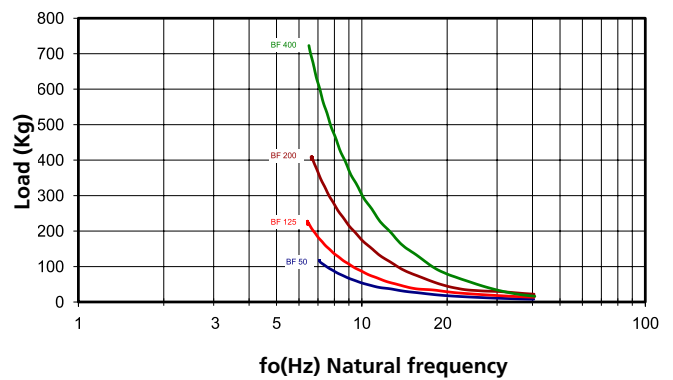


Dynamic behaviour

Static load deflection graph



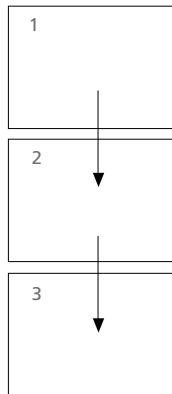
Natural frequency (Hz)



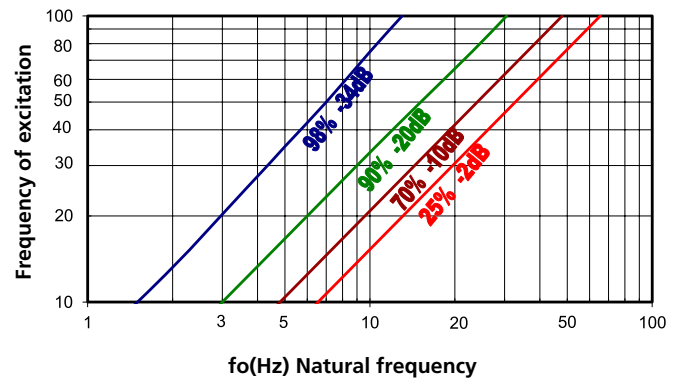
To select correct mounting, following data are needed:

- Load per mounting (kg).
- Disturbing frequency (Hz).

Select correct load line in diagram 1 and refer to diagram 2 to obtain the Natural frequency. With this natural frequency prolong this line to the diagram 3 and obtain the % of isolation at the given frequency of excitation.



% of isolation and attenuation in dB



	REF. AMC	MAX. PERMANENT LOAD	Ø	Height	CODE
	BF 50	50 Kg.	40	28	24201
	BF 125	125 Kg.	60	36	24202
	BF 200	200 Kg.	80	40	24203
	BF 400	400 Kg.	95	40	24204

AKUSTIK + AMC Mecanocaucho & AKUSTIK+^{by getzon}sylomer[®]

AKUSTIK+ AMC Mecanocaucho

FLOATING FLOOR MOUNTS

G Floating floor mounts

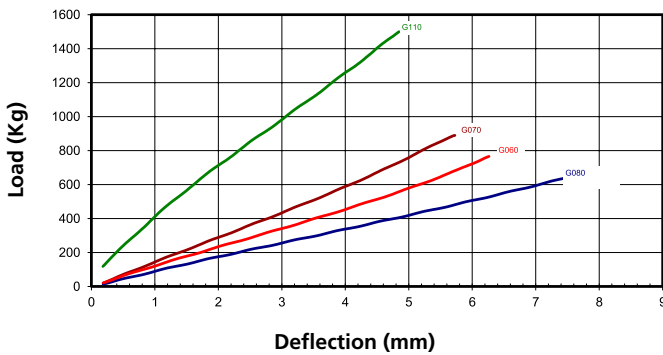
Load from 300 to 800 kg

A range of rectangular mounts ideal for those installations that do not need anchoring or fixation.

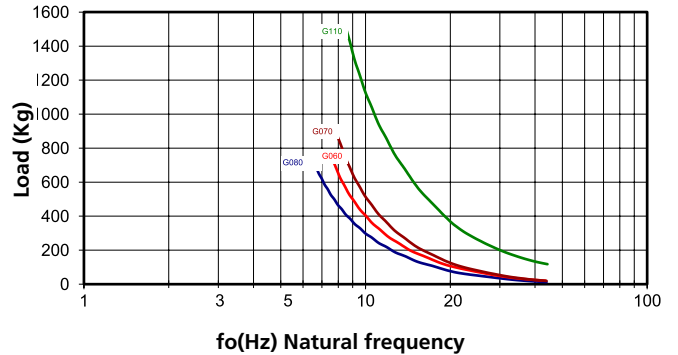


Dynamic behaviour

Static load deflection graph



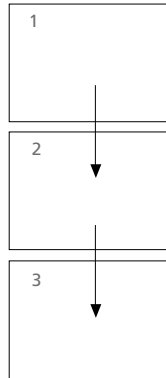
Natural frequency (Hz)



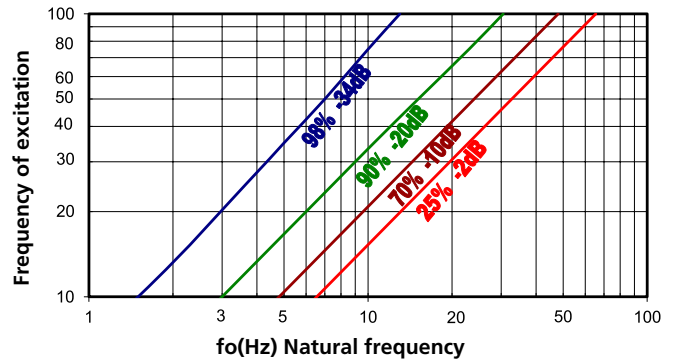
To select correct mounting, following data are needed:

- Load per mounting (kg).
- Disturbing frequency (Hz).

Select correct load line in diagram 1 and refer to diagram 2 to obtain the Natural frequency. With this natural frequency prolong this line to the diagram 3 and obtain the % of isolation at the given frequency of excitation.



% of isolation and attenuation in dB



	REF. AMC	A (mm.)	B (mm.)	LOAD MIN (Kg.)	LOAD MAX (Kg.)	CODE
	G-060	70	30	180	300	152005
	G-070	80	30	350	600	152006
	G-090	100	40	200	500	152008
	G-110	110	30	1600	3000	152009
	G-080	80	50	200	500	152007

TABIABSORBER

Delivery format: 1x1.25 meter layers

EFFECTIVENESS: Manufactured from CR (NEOPRENE®) particles and then compressed, the tabiabsorber can be furnished in two different versions depending on its use.

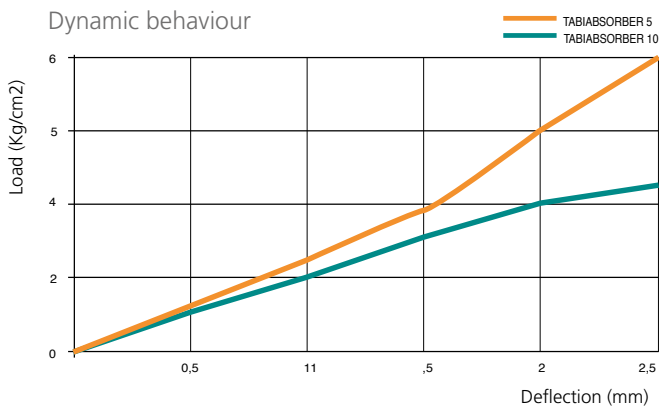
VERSATILITY: The TABIABSORBER can be furnished in two different versions depending on its use.

TABIABSORBER 5: Shock absorber and noise isolator.

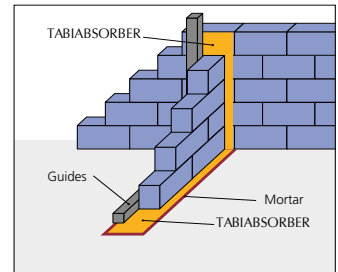
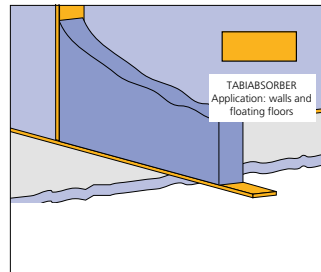
TABIABSORBER 10: Vibratory insulation.

We offer the cutting service upon requested dimensions.

EASY TO INSTALL: Due to its exterior texture, the adherence to plaster, glue, concrete etc it is easily done thanks to its waterproofing.



	REF. AMC	CODE
	Tabiabsorber 5	30105
	Tabiabsorber 10	30110
	Tabiabsorber Curl 8/4	30106
	Tabiabsorber Curl 17/8.	30107



The Tabiabsorber can be cutted in bands

	TABIABSORBER 5 CODE 30105	TABIABSORBER 10 CODE 30110	TABIABSORBER CURL 8/4 CODE 30106	TABIABSORBER CURL 17/8. CODE 30107	NORMA DIN
SIZES (m)			8x1,25	8x1,25	
THICKNESS (mm)	5 mm	10 mm	8/4 (8 minimum + 4 on the curl zone)	17/8 (17 minimum + 8 on the curl zone)	
DENSITY (Kg/m³)	820	850	680-750	500-600	
WEIGHT/m² (kg)	4.1	8.5	3,87-4,73		
FUERZA A TRACCIÓN (N/mm²)	1.05	1.45	0,4	0,3	53571
LENGTHENING TILL RUPTURE (%)	90	108	50	40	53571
TENSIÓN BAJO PRESIÓN (N/mm²)	0.6 a 30% of compression	0.8 a 30% of compression	0,1		53577
WATERPROOFING, K VALUE. (cm/s)	-	0.03			18035/6
MAX. TEMPERATURE (C°)	-40 a 115	-40 a 115	-30 a 80	-30 a 80	
FIRE RESISTANCE	Clase B2	Clase B2			4102
STRUCTURE NOISE IMPROVEMENT (DB)			22	28	

APPLICATIONS



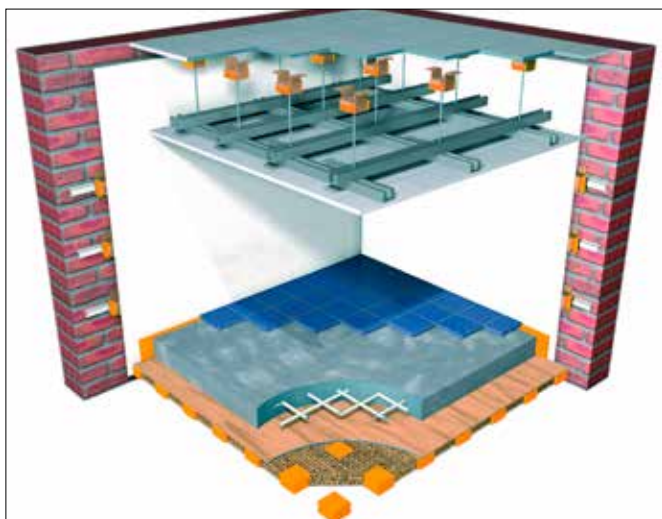
Alfortville Recording Studio.



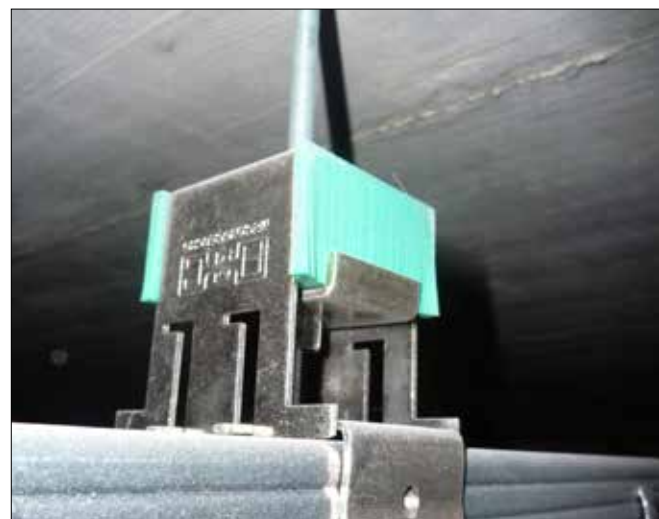
Sheraton Casablanca Hotel.



Ep+Sylomer Type 2.



"Box in Box" principle of installation.



Example of installation of an Akustik Super T60 + Sylomer 30 Type B

AKUSTIK + sylomer[®] by getzner

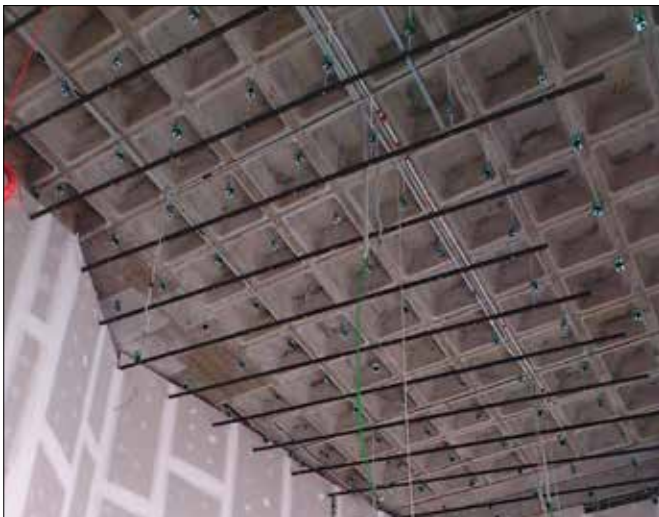
APPLICATIONS



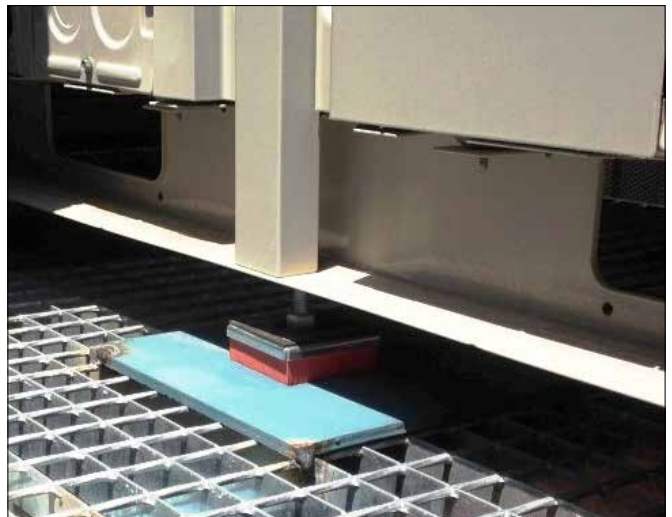
Music School in Madrid



Bier House in Finland.



Caixa Forum Zaragoza.



Example of installation of a TSR+Sylomer[®]



Installation of FZH+Sylomer floor mounts on a recording studio in Spain.



Installation of an FZH+Sylomer[®] floor mount.

AMC REFERENCES IN THE WORLD OF SOUND

FRANCE, ITALY, SPAIN, UNITED KINGDOM, PORTUGAL, FINLAND, GREECE...

Project: BIBLIOTHEQUE
NATIONALE DE France
Country: France

Project: CINEMA PATHÉ ECHIROLLES
Country: France

Project: CINEMA NEF CHABANT
Country: France

Project: CINEMA PATHÉ BELLE EPINE
Country: France

Project: CINÉMA PATHÉ LIEVIN
Country: France

Project: CINEMA PATHÉ LAGARDE
Country: France

Project: CINEMA PATHÉ EVRY
Country: France

Project: CINEMA PATHÉ IVRY
Country: France

Project: CINEMA UGC LUDRES
Country: France

Project: ADIDAS STORE
Country: France

Project: CLUB MED STORE
Country: France

Project: CENTRE CULTURAL
ST MEDARD
Country: France

Project: THEATRE BARBEY
Country: France

Project: CINEMA UGC TALENCE
Country: France

Project: CINEMA MK2 TOLBIAC
Country: France

Project: CINEMA UGC CRETEIL
Country: France

Project: CINEMA PATHÉ BESANÇON
Country: France

Project: CINEMA PATHÉ LINGOTTO
Country: Italy

Project: MAISON
DES MUSIQUES AMPLIFIÉES
Country: France

Project: ALOUETTES
ARDIN ALFORTVILLE
Country: France

Project: PÉPINIÈRE D'ENTREPRISES
FRICHE BELLE DE MAI
Country: France

Project: AGF ASSURANCE OFFICES
Country: France

Project: CINÉMA LES AMBASSADEURS
Country: France

Project: CASA DA MUSICA
Country: Portugal

Project: CINEMA MAIASHOPPING
Country: Portugal

Project: PALACIO EUSKALDUNA
Country: Spain

Project: BALUARTE AUDITORIO DE
NAVARRA
Country: Spain

Project: TEATRO LICEO DE BARCELONA
Country: Spain

Project: LAUREN CINEMA THX
Country: Spain

Project: AC HOTELES
Country: Spain

Project: LAUREN CINEMA THX
Country: Spain

Project: MULTICINES VALDEPEÑAS
Country: Spain

Project: CENTRO COMERCIAL
MIRAMAR
Country: Spain

Project: MAX CENTER CINES
Country: Spain

Project: CINES CORTE INGLES LISBOA
Country: Portugal

Project: CINES CARREFOUR ALICANTE
Country: Spain

Project: CENTRO COMERCIAL VIGO
Country: Spain

Project: CENTRO COMERCIAL
BOULEVARD
Country: Spain

Project: STUDIO DE TÉLÉVISION
NANTES
Country: France

Project: ZARA INDITEX
CONFERENCE HALL
Country: Spain

Project: FORUM BARCELONA
Country: Spain

Project: TERRA MITICA
Country: Spain

Project: CINEMA MAJESTIC
Country: France

Project: JDC CENTER LA SOULAIE
Country: France

Project: TEATRO ANESIS
Country: Greece

Project: RECORDING STUDIO
Country: Finland

Other Projects: BARS, DISCOTHEQUES,
CAFETERIAS, MUSEUMS, LIBRARIES,
SHOPS, PUBS.

Country: Spain, France, United
Kingdom, Italy, Portugal, Finland and
Greece.



NEW EXPOSITION TOOLS FOR THE AKUSTIK RANGE OF PRODUCTS



Adapted for show rooms or point of sale areas.



TSR+SYLOMER® Desktop Exposition tool for Point of sale areas.

AMC CATALOGUES



AMC-MECANOCAUCHO® ANTIVIBRATION MOUNTINGS

Rubber to metal mounts for industrial applications.



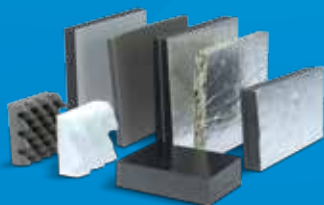
VIBRABSORBER + by getzner **sylomer**® SPRING MOUNTS

Complete range of spring mounts for industrial acoustics.



Granab® Golvregelsystem

Acoustic and technical floor for buildings.



AKUSTIKABSORBER

Soundproofing composites for industrial applications.



by getzner **sylomer**®

Micro-cellular polyurethane material specially conceived for vibration isolation.



Aplicaciones Mecánicas del Caucho, S.A.

Industrialdea Parc 35 A.
E-20.159 Asteasu. Spain.
Tel.: + 34 943 69 61 02
Fax: + 34 943 69 62 19
e-mail: sales@amcsa.es
www.mecanocaucho.com
www.akustik.com

